

INTERIOR WORLD

162

Office



Emre Group Office

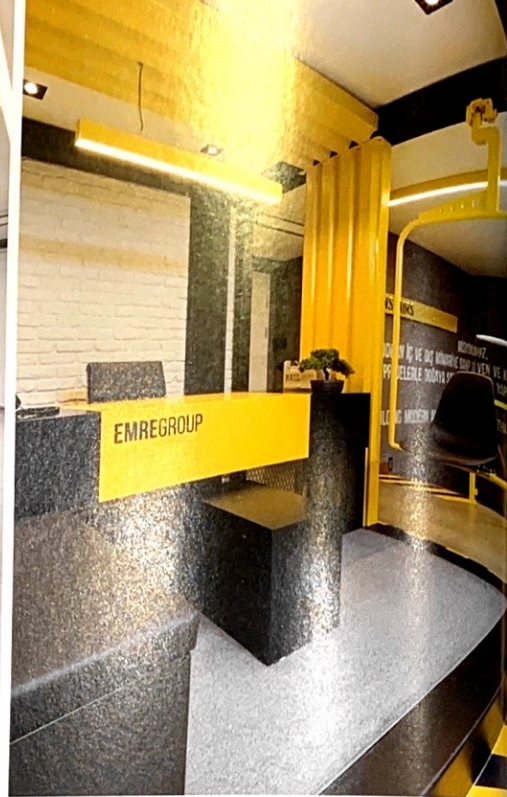
Design Renda Helin Design & Interiors (www.rendahelin.com)
Location Istanbul, Turkey
Built Area 220m²
Photographs Furkan Uyan

설계 렌다 헬린 디자인 & 인테리어스
위치 터키 이스탄불
면적 220m²
사진 푸칸 우안



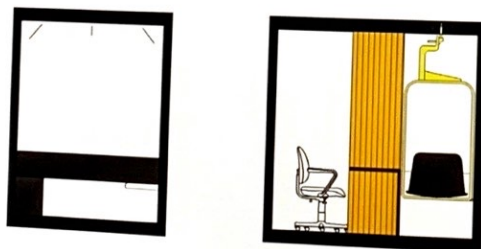
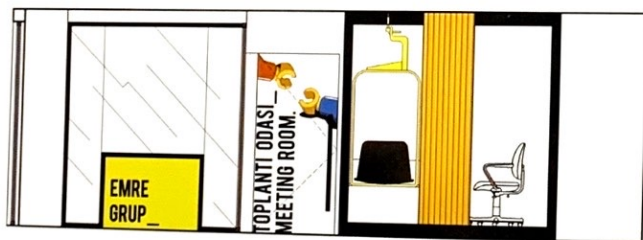


Reception

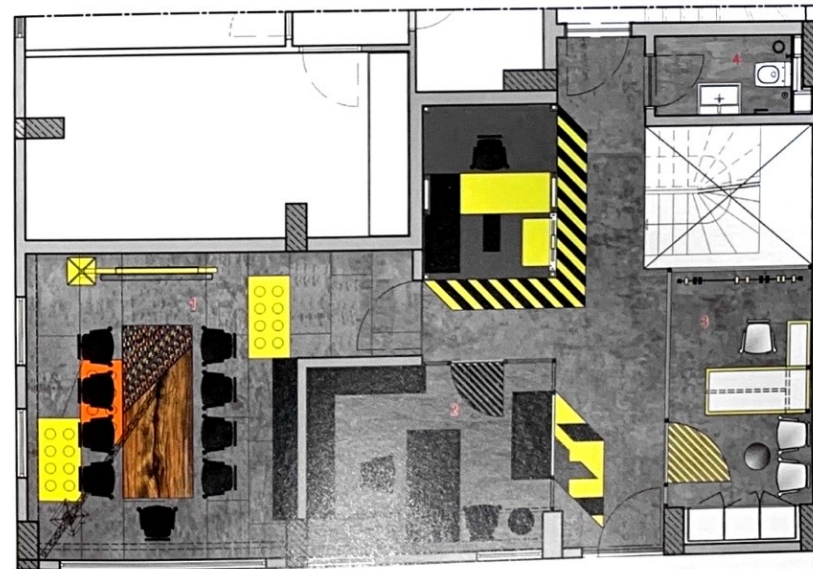


Accountant office

Section - reception area



Section



- 1 Meeting room
- 2 Director room
- 3 Accountant office
- 4 WC

Floor plan



Accountant office graphic wall

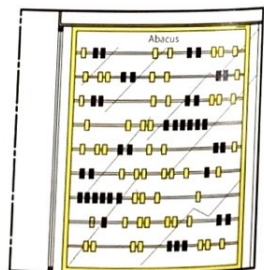
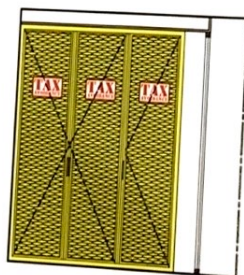
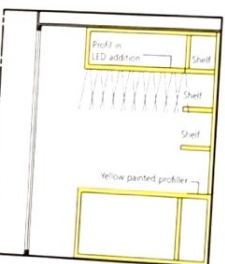


Accountant office



Meeting room

Section - account office



Section



Meeting room

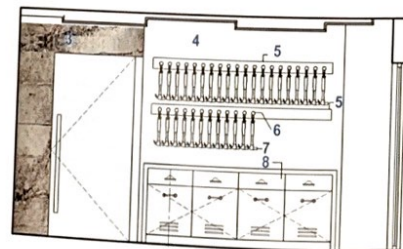
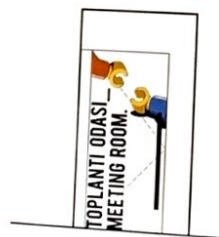




Meeting room

■ Section - meeting room

- 1 Yellow painted ferrous jib crane
- 2 H black iron cross table legs
- 3 Wall art stone concrete wall
- 4 Wall fire brick
- 5 Black painted wood
- 6 Thick construction
- 7 Black wooden hammer
- 8 The drawers made of black metal sheet cupboard

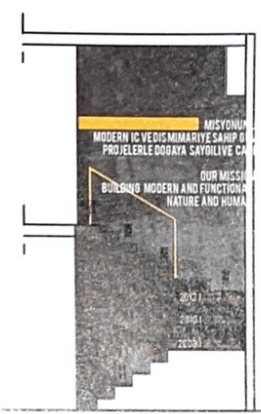
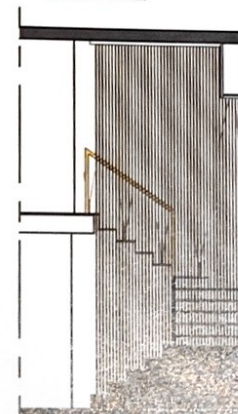


Section

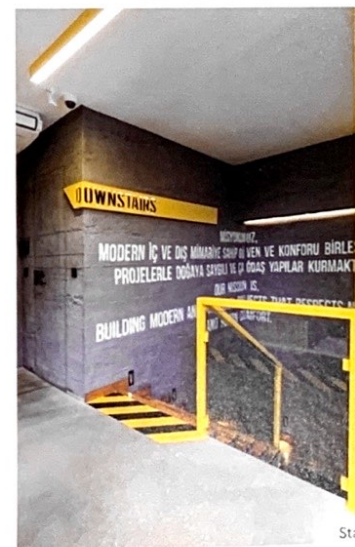
■ Section - stair wall

MİSYONUMUZ,
MODERN İÇ VE DİŞ MİMARİYE SAHİP OLUŞU VE KONFORU BİRLEŞTİREN
PROJELERLE DOĞAYA SAYGILI VE CAGDAS YAPILAR KURMAKTIR...

OUR MISSION IS
BUILDING MODERN AND FUNCTIONAL PROJECTS THAT RESPECTS NATURE
AND HUMAN COMFORT.



Section



Stair





Hobby room



Lounge



Technical room



Lounge



The firm has been serving with extensively in Construction Industry, which constituted the main concept in interior design. The industrial design approach is adopted in order to represent construction sector, and is reflected especially in the reception and accountancy department, the director room, the meeting room and the entrance floor where the common WC is located; and further enhanced by the yellow and black colors which are also another reference to construction sector. The material preferences were determined among the raw and natural appearance of the building materials, and the indispensable elements of the construction atmosphere were revealed by the use of materials such as gross concrete, epoxy, brick, iron profile and mesh metal.

One of the most prominent points of the project is undoubtedly hidden in the details. The Lego Movie inspired the design of the meeting room, and the use of the brick and lego functions are equally emphasized. Movie's main motto, 'Grab a hat let's build something' has become the basic vision and slogan of the company. A part of the meeting table was made of the original legos while the other part was made with a lighting element designed especially in the form of a crane. The hammers placed in the wall of the meeting room represent the constructions of Emre Group until today. At the same time the hammer symbolizes the force, labor, power of work and the whole state of existence of a building. Each hammer has the district

name, parcel and island number referring to the location of the project. In the project, graphic works come forward in design, and a slogan expressing the world view, philosophy and vision of the company can be seen on the gross concrete wall of the staircase.

건설업계에서 폭넓게 활동하는 엠레 그룹의 특성을 인테리어 디자인의 메인 콘셉트로 구성했다. 건설 요소를 상징하기 위해 채택된 디자인 방식은 리셉션과 회계 부서, 중역의 화장실이 있는 출입구 층에 반영하고, 건설 분야를 나타내는 노란색과 검은색으로 이러한 상징성을 한층 강화시켰다. 가공하지 않은 건물 자체의 자연스러운 모습이 어떤 건축 재료를 사용할지에 대한 결정 요소로 작용하였다. 건설 분위기의 필수 요소는 거친 콘크리트와 예목시, 벽돌, 강철 프로파일, 메쉬 금속과 같은 재료를 사용하여 나타났다. 프로젝트의 가장 중요한 점은 디테일에서 드러난다. 레고 영화는 회의실 디자인에 영감을 주었고, 벽돌과 레고 기능의 사용은 똑같이 강조된다. 영화의 슬로건인 '모자를 잡아. 건물을 지어보자'는 엠레 그룹의 기본 비전이자 슬로건이 되었다. 회의 테이블 일부는 실제 레고로 제작됐으며, 나머지 부분은 크레인 형태로 설계된 조명 요소가 추가되었다. 회의실 벽에 놓인 망치는 오늘날까지 엠레 그룹이 건설한 건축물을 상징하는 동시에 힘, 노동력과 함께 한 건물이라는 존재의 전체 상태를 보여주기도 한다. 각 망치에는 프로젝트의 위치를 가리키는 지역 이름, 구획, 섬 번호가 있다. 이 프로젝트에서 그래픽 작업이 디자인 전면에 등장했고, 기업을 세계관, 철학, 비전에 담긴 슬로건은 건물의 전체 콘셉트 벽에서 볼 수 있다.

